

Eleventh Judicial Circuit of Florida Criminal Mental Health Project



Making Jail the Last Resort

Cindy A. Schwartz, MS

Program Director

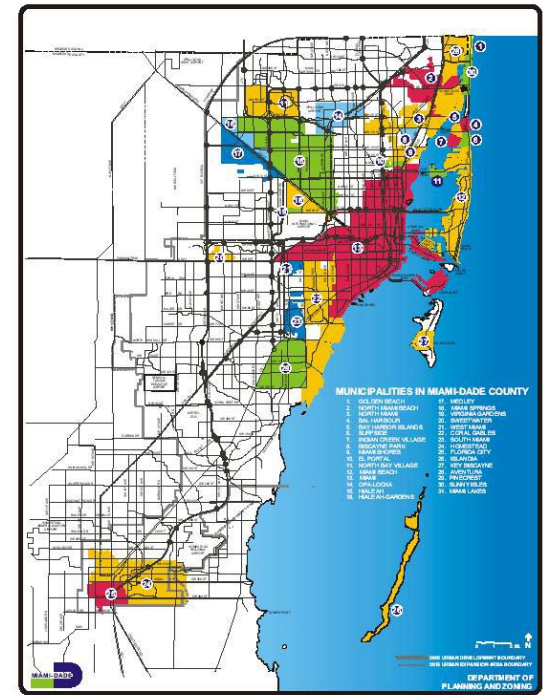
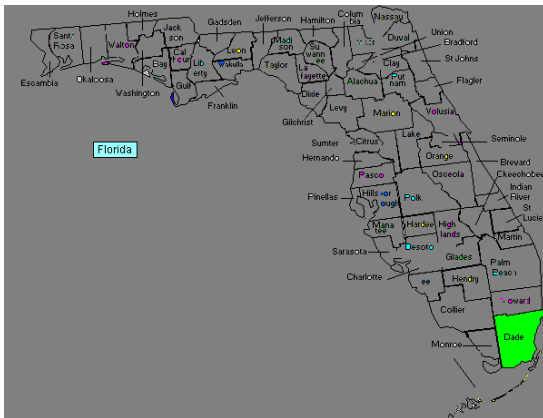
Jail Diversion Expansion Program

Miami-Dade County, Florida Community Characteristics



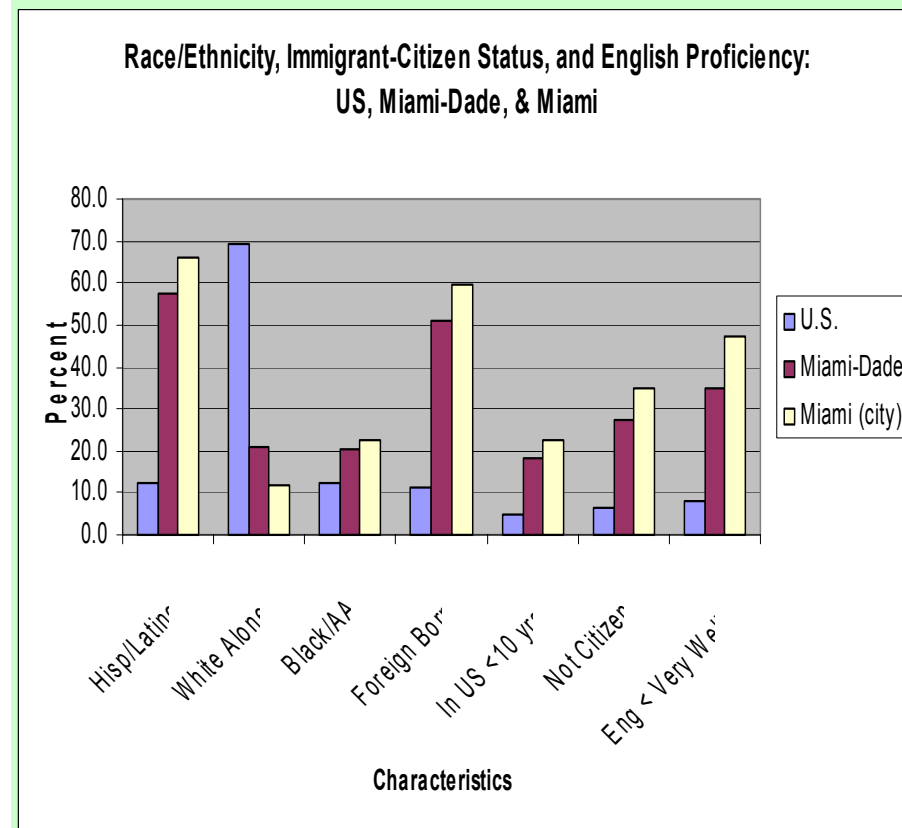
- 31
Municipalities

- 7 Mental Health
Catchment Areas



Race/Ethnicity, Immigrant-Citizen Status, and English Language Proficiency

- 8th most populous county in US (2.25 million (2000 US Census))
- #2 in Hispanic pop. (1.3M, 57% v. 13% US)
- #9 in African-American pop. (460K, 20% v. 12% US)
- 51% foreign-born (11% US)
- 19% in US < 10 years (5% US)
- 27% not citizens (7% US)
- 35% speak English less than 'very well' (8% US)





The Problem & Need for the Program

- Miami-Dade County has the highest percentage of persons with SMI than any other US urban area (9.1% or approximately 210,000 people)
- Less than 13% of these persons receive treatment



The Problem & Need

- Approximately 45% of the homeless in Miami-Dade County have a chronic mental illness and co-occurring disorder
- There are 5 times more people with mental illnesses in Florida jails than in state hospitals
- Persons with mental illnesses stay in jail 8 times longer than those without mental illness at a cost of 7 times more



The Problem & Need

- The Miami-Dade County Jail has become by default the largest public psychiatric facility in Florida.
- Approximately 500 detainees receive psychotropic medication(s) per day.
- 800-1200 detainees with mental illnesses in the Miami-Dade County jail per day.
- \$15 million spent annually to manage this population in jail (treatment not included).
- 13 persons with mental illnesses have been killed by police since 1999.

Solution: 11th Judicial Circuit's Criminal Mental Health Project

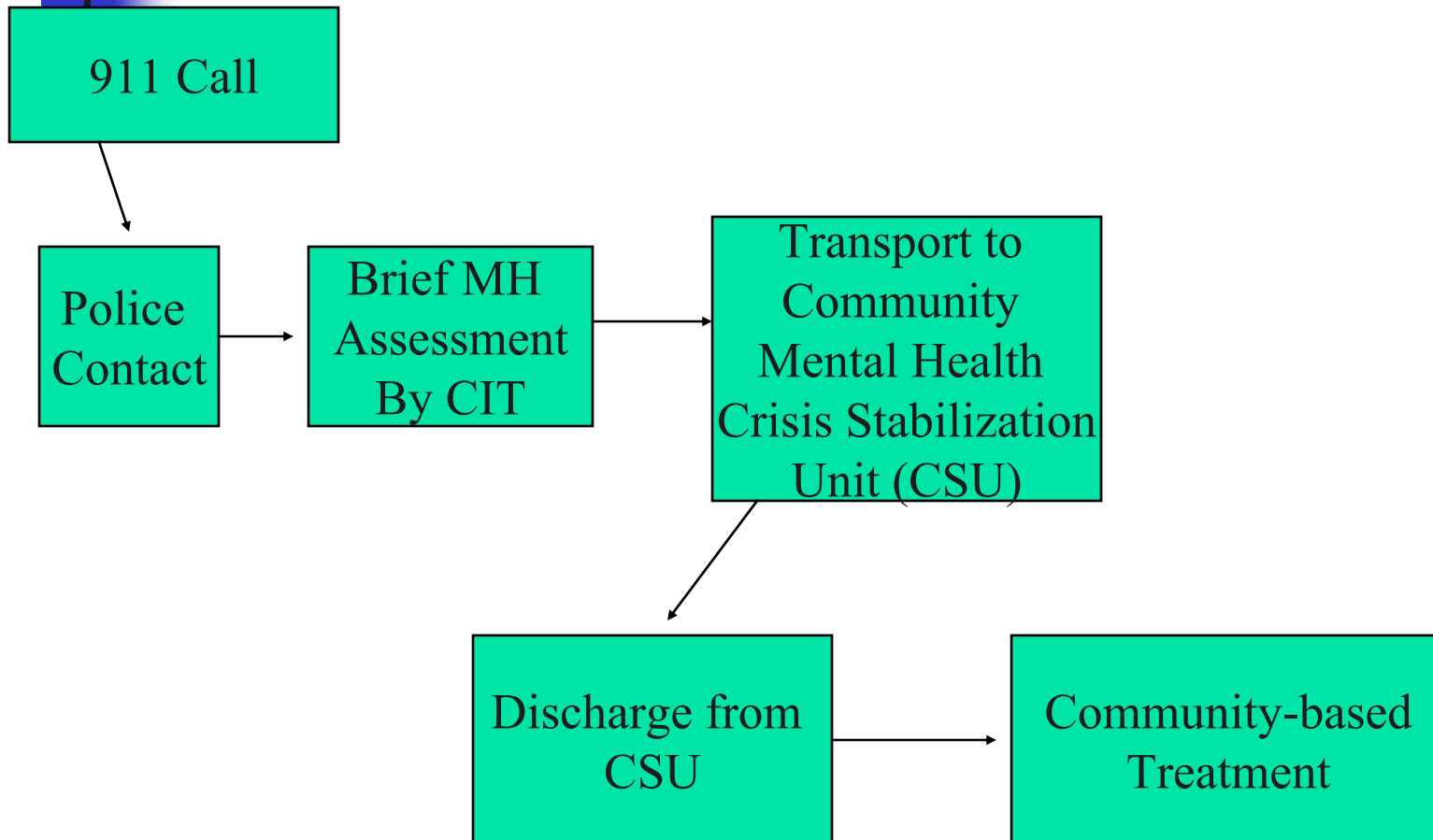
- Pre-Booking Diversion

Crisis Intervention Team Policing (CIT)



CIT officers receive special training to respond to crisis calls involving persons with suspected mental illness. When appropriate, CIT officers transport individuals with mental illness to community mental health facilities for evaluation, treatment, and referrals instead of making an arrest. Fourteen police departments are now involved in this program.

Pre-Booking Diversion Process



11th Judicial Circuit's Criminal Mental Health Project

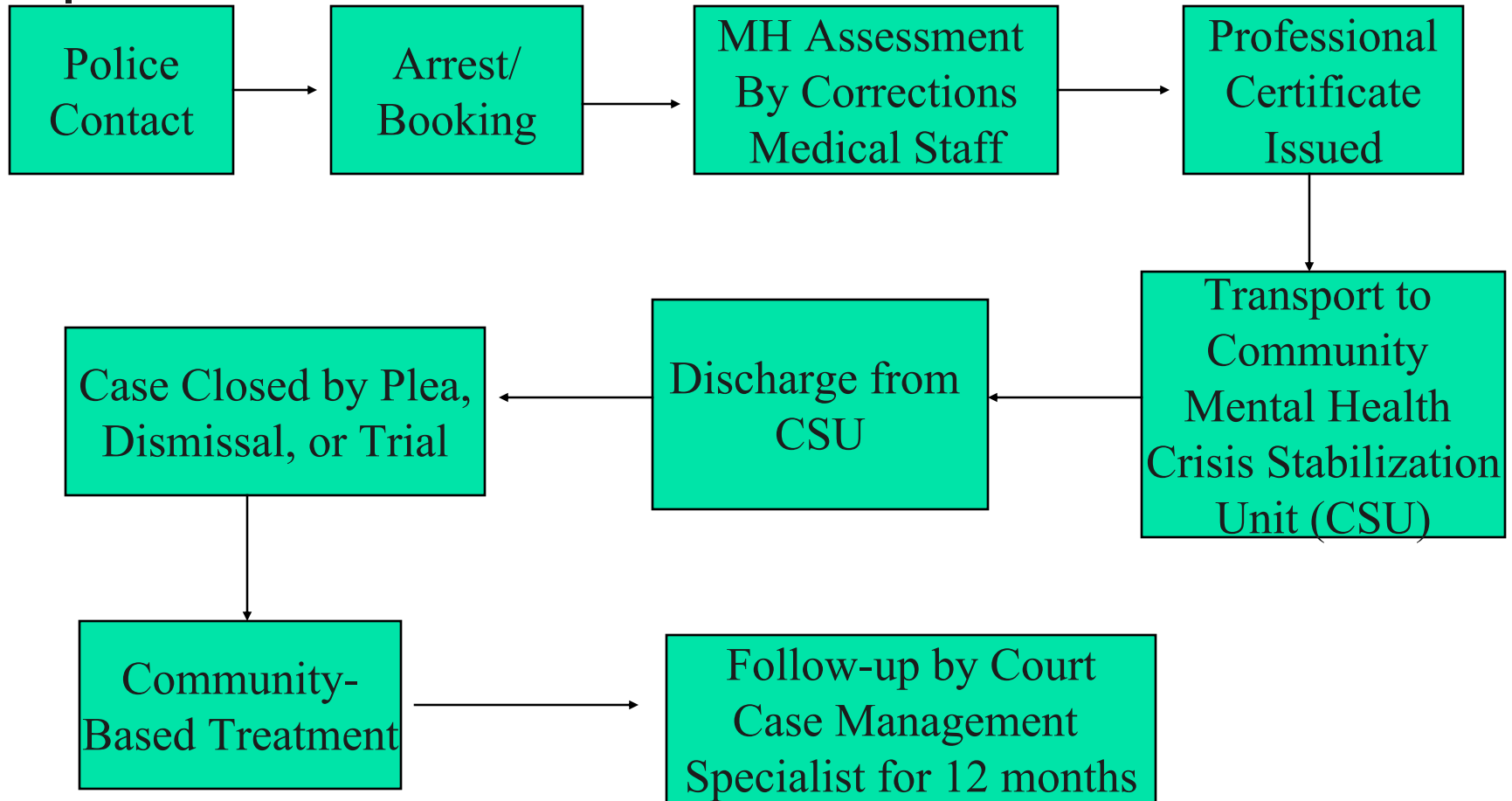
- Post-Booking Diversion

County Court Jail Diversion Program



Within 24-48 hours after arrest, misdemeanor defendants with mental illness are diverted to community mental health facilities for appropriate treatment.

Post-Booking Diversion Process





Target Group

- Estimated 90% Psychotic Disorders and 75% Co-Occurring Disorders
 - 81% Male/ 19% Female
 - 50% Homeless
- 38% African-American, 32% White/Non-Hispanic, 30% Hispanic
 - Average Age: 45



Co- Occurring Disorders

Current research indicates that approximately 75% of this population have co-occurring substance abuse disorders. These individuals often display:

- Aggressive and violent behavior
- Long histories of institutionalization
- Diminished ability to function independently



Interventions

- Engage the person
- Assessment
- Individualized planning
- Continuity of care
- Comprehensive services



Engagement

A court case management specialist collaborates with community mental health center case managers to develop comprehensive aftercare plans for the Jail Diversion clients.



The Assessment

- Assess psychosocial needs and goals
- Assess need for integrated co-occurring treatment and services
- Assess most appropriate level of residential placement
- Assess financial resources and need for linkage to entitlements
- Develop individualized treatment plan



Continuity of Care

Linkage to Case Management services will assist the individuals to access the programs and services that are essential to successful rehabilitation outcomes.



11th Judicial Circuit's Criminal Mental Health Project

- Comprehensive Care Program

The Florida Department of Children & Families has instituted a comprehensive care program that includes case management, housing, and medication for those individuals with mental illnesses who continually revolve through the criminal justice system. A court case management specialist collaborates with community mental health center case managers to develop comprehensive aftercare plans and linkages for County Court Jail Diversion clients.



11th Judicial Circuit's Criminal Mental Health Project Continued

- **Housing & Transition Program**

Assessment tool was developed to assist with placement of County Court Jail Diversion clients in appropriate housing with case management and treatment services.

- **Identification Card Program**

ID cards are available for those clients that request one during discharge and aftercare planning. This card can be used at the local Social Security Administration Office when applying for or reinstating benefits. The local Social Security Office was involved in the development of this ID card.



11th Judicial Circuit's Criminal Mental Health Project

- Assisted Living Facility (ALF) Quality of Care Program

The court developed a monitoring program and referral system for ALFs in order to improve the quality of care and access to mental health services at these facilities. Participating ALFs are continuously monitored and evaluated by project staff. These facilities have agreed to conform with the court's standard of care.



11th Judicial Circuit's Criminal Mental Health Project Continued

- **Stakeholders/Partnerships**

Monthly meetings are held with key stakeholders, including the Court, State Attorney's Office, Public Defender's Office, Community Mental Health Centers, Police Agencies, the FL Department of Children & Families, Social Security Administration, advocates, community providers, mental health professionals, researchers, and consumers and their families.

- **Planned Computer Linkage System**

Management Information system and the necessary technology to link county-wide stakeholders into a comprehensive network working toward a common goal.



For more information contact:

Cindy A. Schwartz, MS

Program Director

Jail Diversion Expansion Program

Richard E. Gerstein Justice Building

1351 N.W. 12th St., Room 226

Miami, FL 33125

(305) 548-5319

cischwartz@jud11.flcourts.org